

e-CatRax E-Gate

Innovation moving through.



The dGate solution is designed and engineered to the smallest details to bring innovation, quality and design to the access control market. The product is the result of the intense analysis of global architectural and design trends associated with thorough mechanical, electrical and electronic engineering. The dGate line offers comfort, sophistication and reliability. This elegant product makes customization easy and facilitates the integration of almost any type of card reader and controller. The dGate is designed for a world that is always in motion.

Technology

The dGate houses a motorized mechanism which opens and closes the passage wings in accordance with access identification and authorization. Several operating configurations can be programmed. Optical sensors are used to identify and prevent the passage of unauthorized persons or “piggy back” attempts.



dPower Motor

dGate uses the exclusive dPower motor, developed entirely by engineering laboratories. dPower allows a controlled movement of the motor resulting in a soft, quiet and comfortable experience for the user.

- Robust;
- Reliable;
- High performance;
- Electronic control;
- Silent.

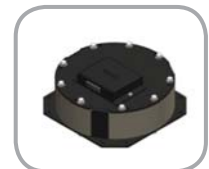
The dPower motor comes in three versions:



Simple motor



Double motor



Triple motor

Technical Features

- Cabinet in brushed stainless steel AISI 304 made of 2.0 mm plate;
- Angel Wings doors type, in Tempered Glass or Polycarbonate, 12 mm thick;
- Internal side doors, with key locks, facilitate access for maintenance and configuration purposes;
- Dedicated microprocessor controls acceleration and deceleration of the gate movement speed, optimizing the passage flow;
- High performance dPower motor capable of opening or closing the access wings as fast as 0,7 seconds. Movement is silent. Encoder feedback provides precise positioning;
- Indicators for visual and audible alarm;
- Detection system: 8 photo sensors to detect passage and 2 safety sensors;
- Safety system – access wings open when an obstacle is detected;
- Anti-fraud detection with audible alarm detects attempts to “piggy-back”, unauthorized access and backward movements;
- Direction control: enables two-way operation, can be configurable to work in different directions of passage;
- Emergency Opening: automatic opening in case of power failure or emergency alarm activation;
- Has large internal volumes to integrate access controller;
- Full range power input (90 to 240VAC);
- 25W Consumption (500mm turnstile with locked door);
- Graphic Display with 480 x 272 pixels resolution, 65k colors with 128 MB flash memory for image storage;
- Upper pictogram with RGB LED high brightness, with individual brightness control for each color.;
- Front pictogram with bicolor LEDs, with individual brightness control for color;
- Dedicated microcontroller for motor control;
- High durability brushless motor;
- Position control of the doors monitored by a magnetic encoder 10 bits;
- Passage control performed by 10 infrared sensors.

Operation pictogram in the upper part of the turnstile, showing green for permitted access or red for access denied.

Orientation pictograms with green arrows indicating the authorization and direction of passage and red indicating access blocked.



Customization

The dGate allows customization of its side panels, as well as their top cover. It is possible to produce unique solutions, following the specification suggested by your architect or designer.



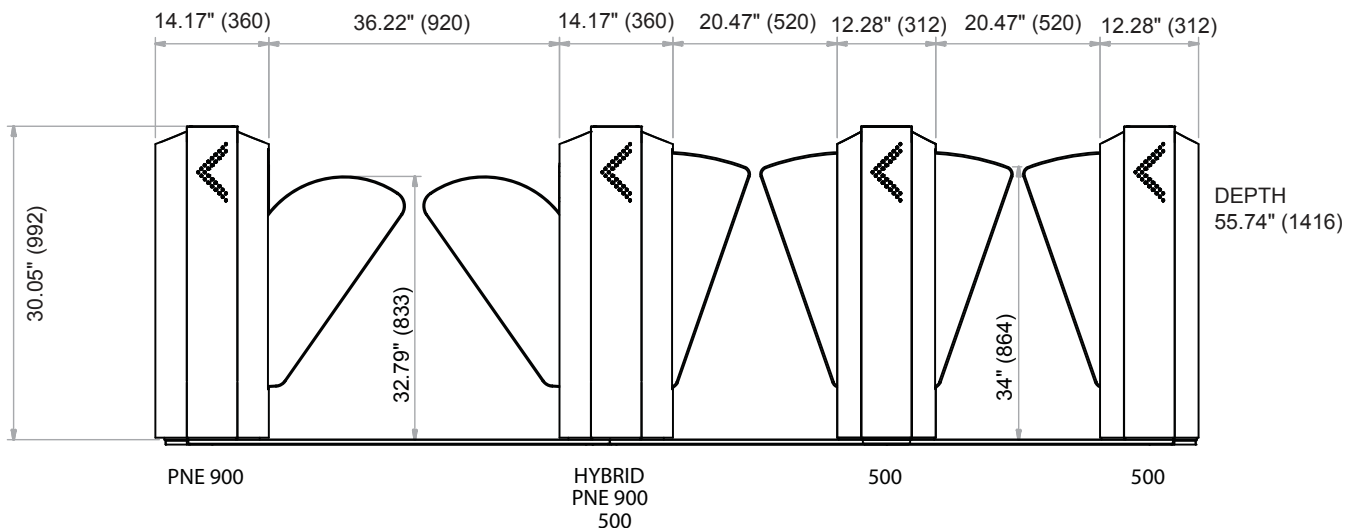
Easy installation of RF card readers or biometric sensors.

- RF card readers
- Finger print and other biometric readers
- Unique card collector mechanism and box
- Smooth upper cover made of high resistance material



Accessibility

The handicapped configuration has a larger span between gate wings, facilitating access for people with special needs.



Specifications: Inches (mm)

EQUIPMENT	SIMPLE MODEL 500	SPECIAL NEEDS 900	HYBRID MODEL
Gate Wings Maximum Height	33.07" (840)	31.92" (811)	33.07" and 31.92"
Gate Wings Opening	16.57" (421)	9.44" (240)	16.57" and 9.44"
Cabinet Height	39.01" (991)	39.01" (991)	39.01" (991)
Cabinet Middle Width	12.2" (310)	14.17" (360)	14.17" (360)
Cabinet Depth	55.74" (1416)	55.74" (1416)	55.74" (1416)
Cabinet End Width	6.29" (160)	6.29" (160)	6.29" (160)

